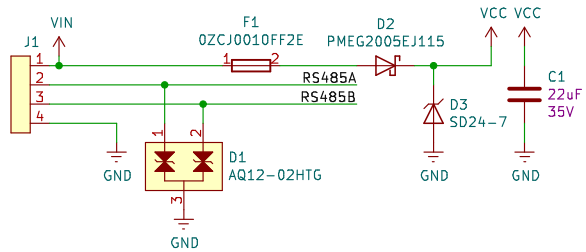
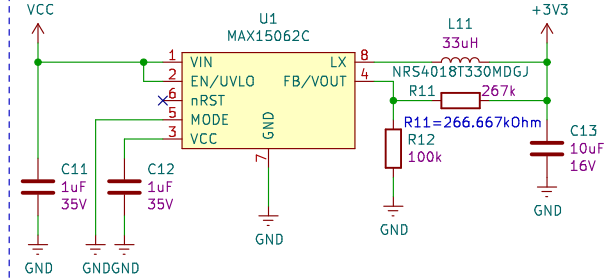


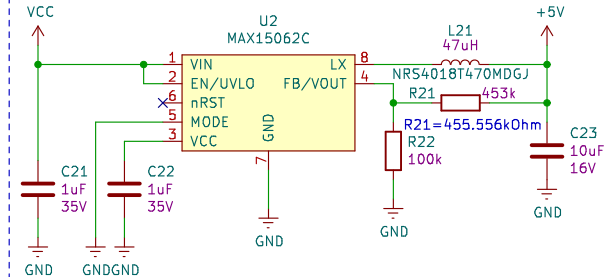
## Input Connector and Protections



## Step-Down 3.3V



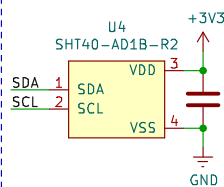
## Step-Down 5V



## Sensors

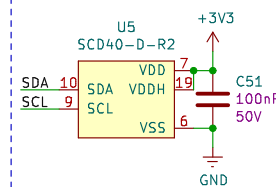
### SHT40 RH+T Sensor

I2C\_ADDR: 0x44



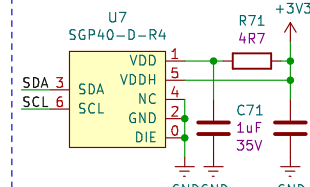
### SCD40 CO2 Sensor

I2C\_ADDR: 0x62



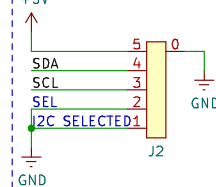
### SGP40 VOC Sensor

I2C\_ADDR: 0x

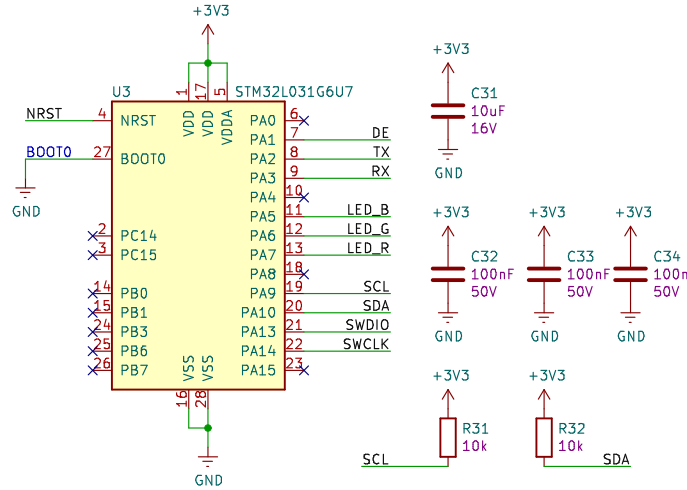


### SPS30 Dust Particles Sensor

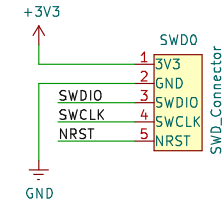
I2C\_ADDR: 0x69



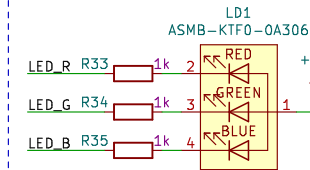
## Microcontroller



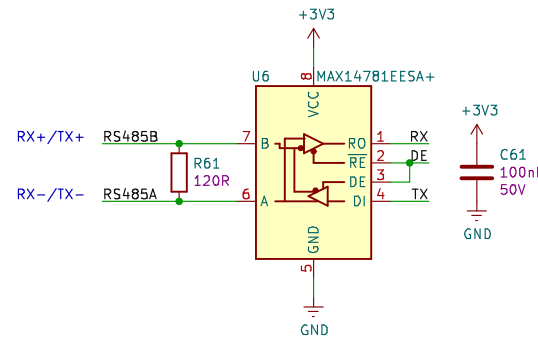
## Programming Connector



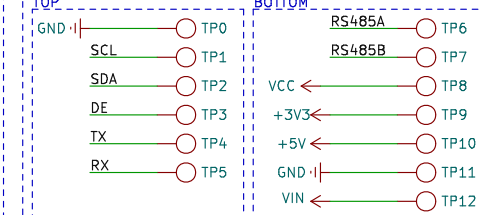
## Signal LED



## RS485 to UART Converter



## Testpoints



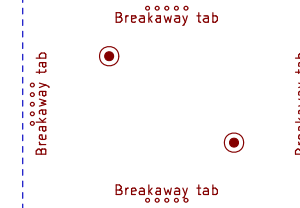
## Additional Silkscreen

TAG TESTING  
TAG SN

VL Logo  
VL Logo



## Breakaway Tabs and Fiducials



Title: Wired IAQ Sensor

Rev: 1

Sheet Name: /  
File: iaq\_wired\_sensor.kicad\_sch

Author: David Žaitlík, Jan Mrňa

Size: A4

Date: 2022-04-28

Sheet: 1/1